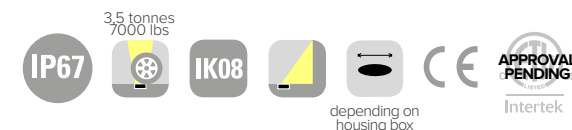
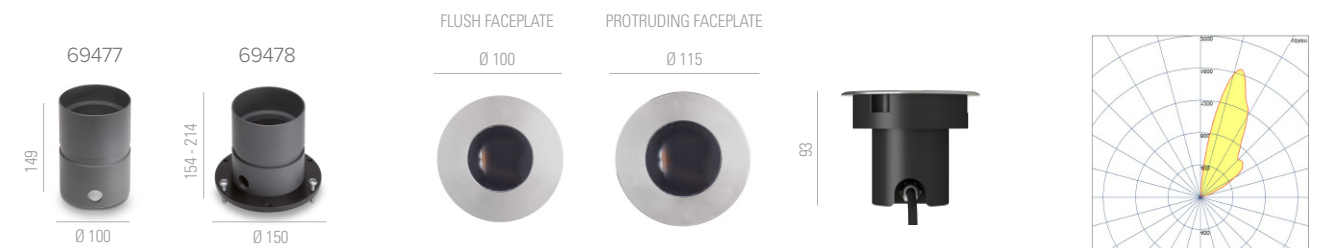
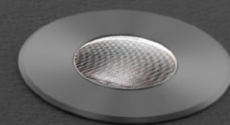
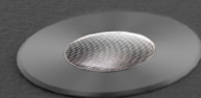


NO GLARE DRIVE OVER
WALLWASHER

MEROPE 100 WW NEW

SPECIFICATIONS

base code	67054
typology	Wallwasher uplight with a drive over load of 3,5 tonnes / 7000 lbs
mounting	Using housing box to be separately ordered as accessory
diameter	Flush faceplate: 100 mm / 3.94". Protruding faceplate: 115 mm / 4.53"
height	93 mm / 3.66"
required depth	Depending on housing box
first fit requirement	Yes, separate housing box: code 69477 or 69478 for millimetre exact height adjustment from 0 to 50 mm/ from 0" to 1.97"
floor cut out	Depending on housing box
construction	Fixture: turning and milling aluminum. Faceplate in stainless steel AISI 316L. Stainless steel A2 screws. Protective tempered glass complete with silicone gasket. Reflector: polycarbonate. Housing box in PVC
finishes	Fixture anodized and faceplate in brushed stainless steel AISI 316L. Glass surface
ingress protection	IP67. Built-in protection from water infiltration and moisture
lamp type	Power LED. Remote power supply not included
lamp wattage	8W at 48V DC. North America 5W at 24V DC
lamp lumens	5W: 500lm - 8W: 800lm
delivered lumens	5W: 370lm - 8W: 650lm
lumen maintenance	50.000h L90
beam	Asymmetric reflector by Bartenbach®: 5° - 75° towards wall
kelvin	2700K CRI93 and 3000K CRI93 / 3 step MacAdam ellipse
special features	48V DC: built-in unpolarized electronic system. 24V DC: built-in reverse polarity protection. Hot plug and electronic control of the operating temperature that guarantees that the fixture will last with ambient temperature up to 60° C / 140° F. Designed with asymmetric reflector to produce homogeneous light distribution on the wall and no glare. The wallwash begins directly over the floor
dimming options	Push button, potentiometer, 0-10V, DALI, DMX, KNX. Dimming options depend on power supply and additional control units to be separately ordered as accessories
standards	CE, UL approval pending



MEROPE 100 WW

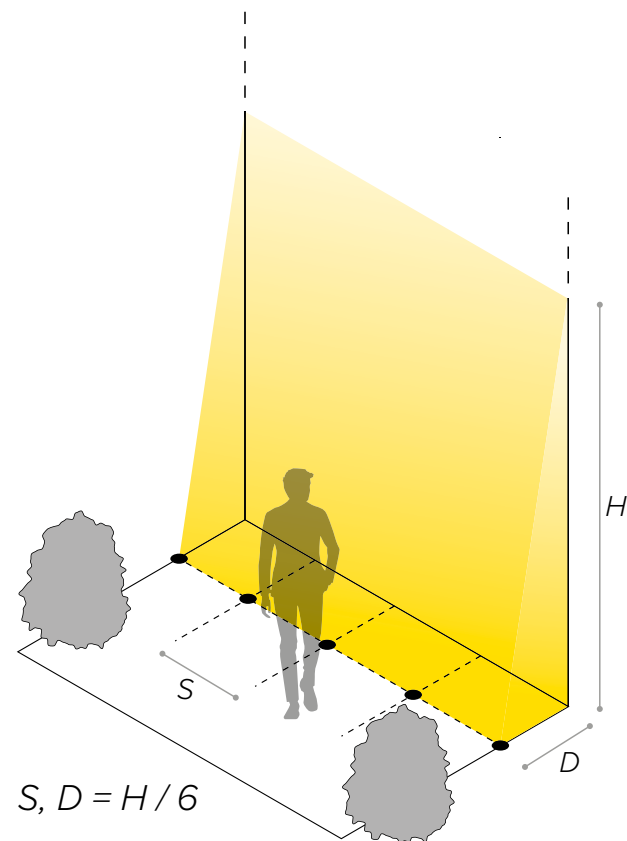
ORDER CODE

BASE CODE	A . POWER SUPPLY	B . KELVIN	C . BEAM
67054	8 48V DC EXCL. power supply R listed 24V DC EXCL. power supply	5 3000K CRI93 8 2700K CRI93	W Wallwasher

Example: BASE CODE **67054** A **8** B **8** C **W** D **B** E **B** = **67054 88WBB**

D . FINISHES	E . OTHER
A stainless steel flush faceplate	A screws on faceplate
B stainless steel protruding faceplate	B no screws on faceplate

For a good light uniformity on the wall, the spacing between two luminaires (S) and the distance from the wall (D) should be the same



Example	H	S, D
	2400 mm / 95"	400 mm / 16"
	3000 mm / 118"	500 mm / 20"
	H MAX 5000 mm / 197"	S, D MAX 830 mm / 33"

MEROPE 100 WW

ACCESSORIES

REQUIRED ACCESSORIES - NOT INCLUDED

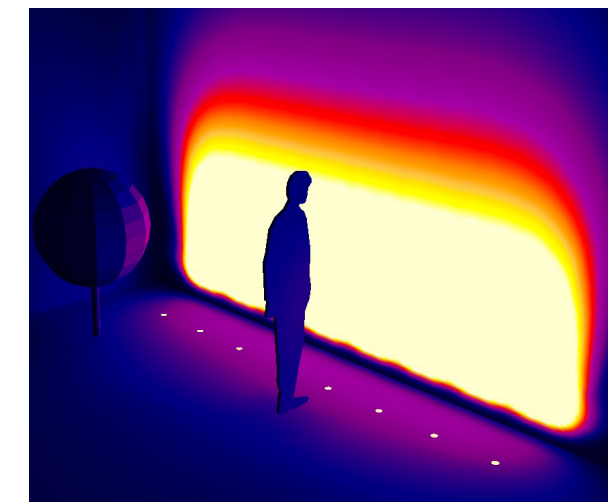
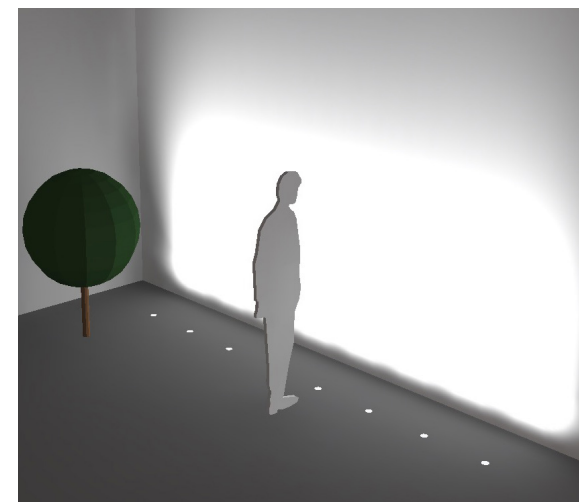
code	description	dimensions mm
69477	housing box for concrete	Ø100xH149
69478	height adjustable housing box for concrete	Ø150xH154-214
69592	suction cup for the extraction of the luminaire	W50xH40

code	output power	input voltage / frequency	IP	dimensions mm
69180	30W	90-264V 47-63Hz	IP20	L160xW46xH30
69181	40W	90-305V 47-63Hz	IP67	L163xW43xH32
69182	60W	90-305V 47-63Hz	IP67	L163xW43xH32
69187	100W	90-305V 47-63Hz	IP67	L220xW68xH39
69188	150W	90-305V 47-63Hz	IP67	L228xW68xH39
69096	50W	99-264V 50-60Hz	IP20	L124xW79xH22

Consult **US distributor** Lites on West
 T: 212.775.6363
 E: info@litesonwest.com

OPTIONAL ACCESSORIES

code	page	description	in/out voltage	IP	dimensions mm
69116/69117		Control unit 24V DC - 48V DC Dimmer interface 0-10V interface			
69116	578	SMART DIMM MASTER 4 Dimmer interface master or 0-10V interface (four channels max load 240W at 24V DC or 320W at 48V DC and No. 32 SMART DIMM SLAVE 4)	24V DC - 48V DC	IP20	W116xD116xH25
69117	578	SMART DIMM SLAVE 4 DMX interface or dimmer interface slave (four channels max load 240W at 24V DC or 320W at 48V DC)	24V DC - 48V DC	IP20	W116xD116xH25



*To choose the power supply, always add a spare 20% as safety margin.
 See pag 597 for cable size and max wiring distance from power supply to last connected luminaire